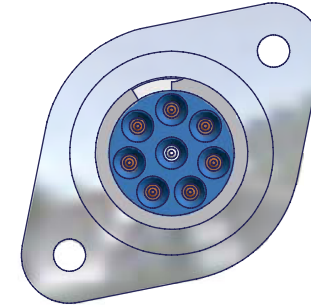
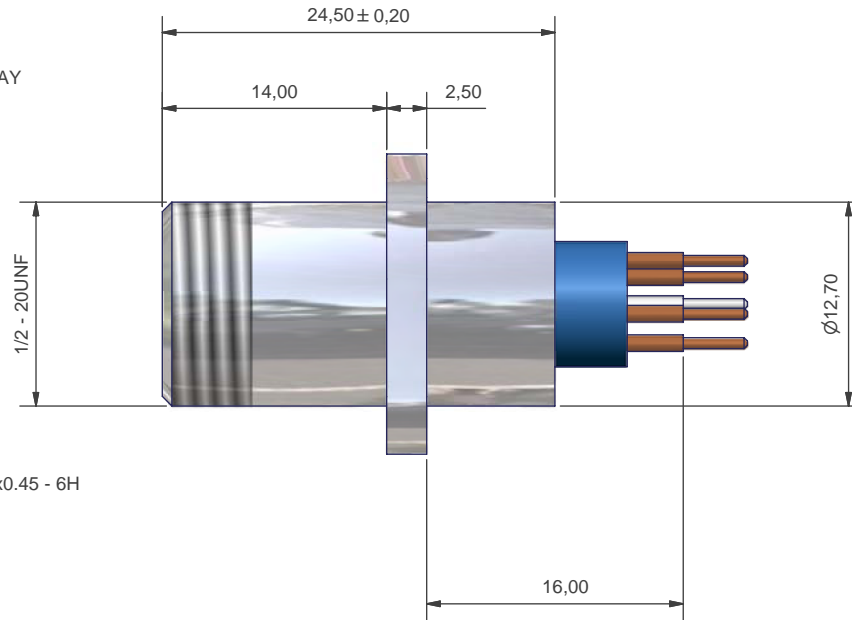
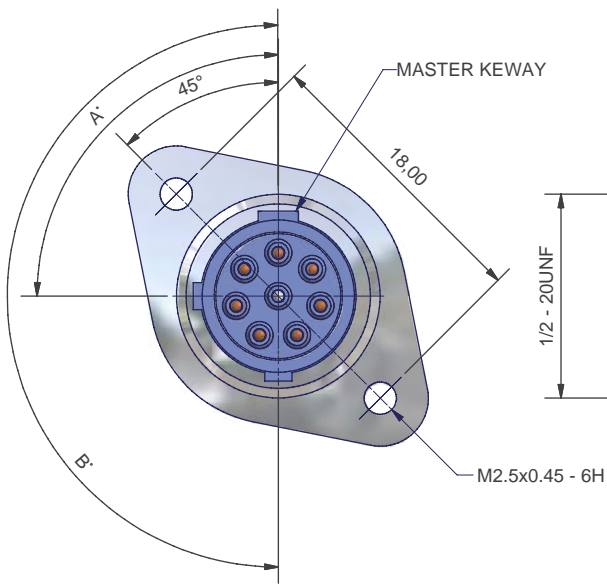




3RD ANGLE PROJECTION



REMOVE ALL SHARP EDGES AND BURRS



NOTES
GENERALLY TO THE REQUIREMENTS OF MIL-DTL-38999
MATERIAL AND FINISH
SEE DATA SHEET FOR SHELL MATERIAL AND FINISH
ALL PARTS ROHS COMPLIANT

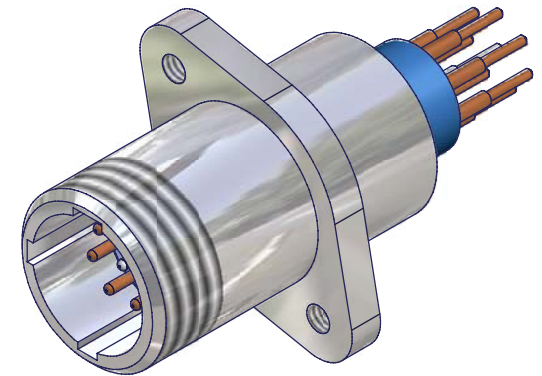
MATERIALS
SEALS - SILICONE
CONTACTS - COPPER WITH GOLD OVER NICKEL PLATING
UL RATING (FLAMABILITY)
RIGID INSERT - V-0/5VA
SEALS - HB
POTTING - V-1

PERFORMANCE
VOLTAGE BREAKDOWN 1800V @ SEA LEVEL
CURRENT RATING
SIZE 16 13 AMPS MAX
SIZE 20 7 AMPS MAX
SIZE 22 3 AMPS MAS
TEMPERATURE RATING
-65°C TO +200°C

ALTERNATE KEYING	A DEG	B DEG
N	-	-
A	90	90
B	90	180
C	180	90

PH3028PAC00

SERIES
SHELL SIZE
PLAN FORM
CONTACT STYLE
ALTERNATE KEYING
MATERIAL + FINISH
MODIFIER (OPTIONAL)



DESIGNED AND MANUFACTURED FOR PROTECH

ISSUE	DCR NO.	DATE	APPROVED	MATERIAL	UNLESS OTHERWISE SPECIFIED ALL DIMENSIONS IN MILLIMETRES TOLERANCE ON DIMENSIONS +/-0.1MM TOLERANCE ON ANGLES +/- 1 DEGREE	DO NOT SCALE THIS DRAWING	POLAMCO LTD WESTON LOCK LOWER BRISTOL ROAD BATH BA2 1EP	PART NOPH302P***
D		11/04/2006	P.L			THIS DRAWING IS COPYRIGHT, AND THE PROPERTY OF POLAMCO LTD. IT MUST NOT BE COPIED, USED FOR MANUFACTURE OR OTHERWISE DISCLOSED WITHOUT PRIOR WRITTEN CONSENT OF THE COMPANY.		ASSY USED ON
					WEIGHT		TITLE	DRAWING NO
					DRAWN	M.PAUL	PANEL MOUNT PIN PCB RECEPTACLE	C0916