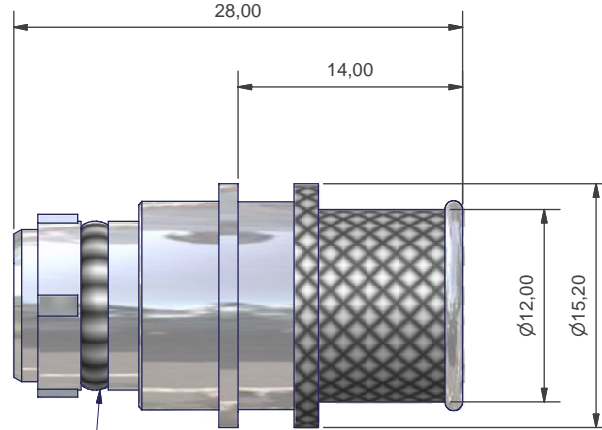
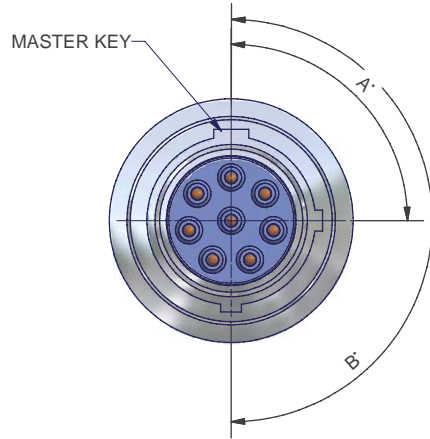


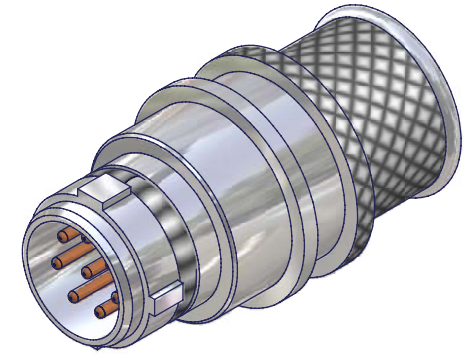
3RD ANGLE PROJECTION



REMOVE ALL SHARP EDGES AND BURRS



360° EMI/RFI SCREENING RING



NOTES
 GENERALLY TO THE REQUIREMENTS OF MIL-DTL-38999
MATERIAL AND FINISH
 SEE DATA SHEET FOR SHELL MATERIAL AND FINISH
 ALL PARTS ROHS COMPLIANT
MATERIALS
 SEALS - SILICONE
 CONTACTS - COPPER WITH GOLD OVER NICKEL PLATING
 UL RATING (FLAMABILITY)
 RIGID INSERT - V-0/5VA
 SEALS - HB
 POTTING - V-1

PERFORMANCE
 VOLTAGE BREAKDOWN 1800V @ SEA LEVEL
 CURRENT RATING
 SIZE 16 13 AMPS MAX
 SIZE 20 7 AMPS MAX
 SIZE 22 3 AMPS MAS
 TEMPERATURE RATING
 -65° C TO +200° C

ALTERNATE KEYING	A DEG	B DEG
N	-	-
A	90	180
B	180	270
C	90	270

PP6028PAC00

SERIES
 SHELL SIZE
 PLAN FORM
 CONTACT STYLE
 ALTERNATE KEYING
 MATERIAL + FINISH
 MODIFIER (OPTIONAL)

DESIGNED AND MANUFACTURED FOR PROTECH

ISSUE	DCR NO.	DATE	APPROVED	MATERIAL	UNLESS OTHERWISE SPECIFIED ALL DIMENSIONS IN MILLIMETRES TOLERANCE ON DIMENSIONS +/-0.1MM TOLERANCE ON ANGLES +/- 1 DEGREE	DO NOT SCALE THIS DRAWING THIS DRAWING IS COPYRIGHT, AND THE PROPERTY OF POLAMCO LTD. IT MUST NOT BE COPIED, USED FOR MANUFACTURE OR OTHERWISE DISCLOSED WITHOUT PRIOR WRITTEN CONSENT OF THE COMPANY.	POLAMCO LTD WESTON LOCK LOWER BRISTOL ROAD BATH BA2 1EP	PART NO PP602*****
D		11/04/2006	P.L					
								ASSY USED ON
								DRAWING NO C0926
					WEIGHT			
					DRAWN	M.PAUL		

POLAMCO LTD

TITLE
PUSH PULL PLUG WITH SCREENING RING